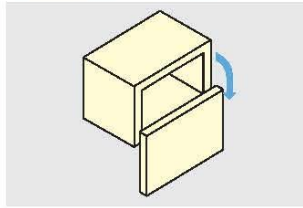


SWING DOWN STAY



SLD



Features

- Unique swing down mechanism holds the door in fully opened position.
- Patented LAPCON technology provides a smooth and quiet motion.
- Sleek & compact design.
- Easy installation.
- Adjustable mounting plate.
- Successfully passed for the 30,000 open/close private cycle test.

Remarks

1 connecting bar SLUB is necessary for 1 set of SLD.

Parts Included

- Binding head tapping screw 3.5×15 for body
- Countersunk head tapping screw 3.5×20 for damper
- Truss head tapping screw 4.5×12 for connecting bar

Sold Separately

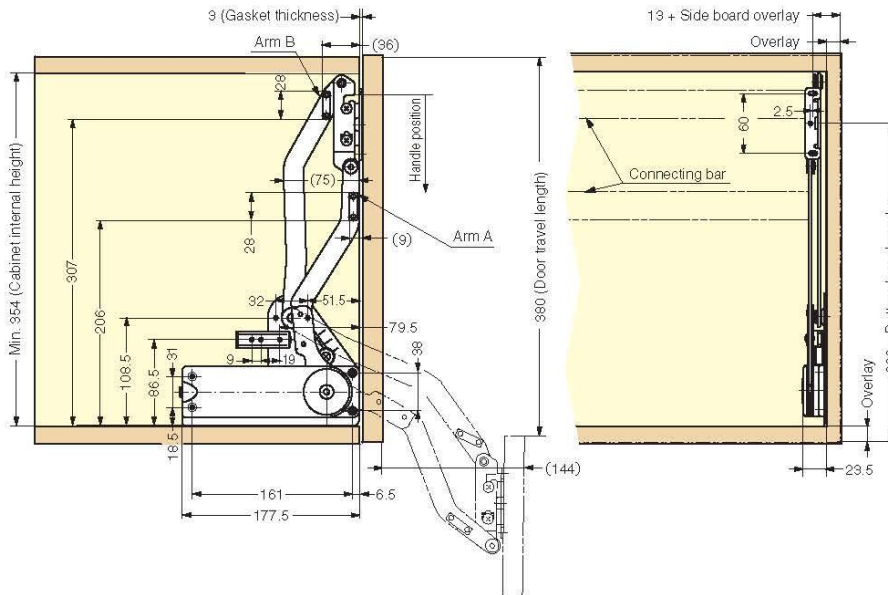
Connecting bar SLUB

If the side board thickness is over 15 mm, the connecting bar should be cut according to the below formula.

Arm A: Connecting bar length = Overall cabinet width - (Side board thickness × 2) - 35

Arm B: Connecting bar length = Overall cabinet width - (Side board thickness × 2) - 19

Installation



Body (1 set)

Item Code	Item Name	Material	Finish/Colour	Door Width	Door Height	Door Weight	Weight	Carton
180-020-848	SLD-3	ABS/Steel	Chrome/Grey	600 ~ 900	360 ~ 400	3 ~ 4 kg	1.9 kg	5 sets
180-020-849	SLD-4	ABS/Steel	Chrome/Grey	600 ~ 900	360 ~ 400	4 ~ 5 kg	1.9 kg	5 sets
180-020-850	SLD-5	ABS/Steel	Chrome/Grey	600 ~ 900	360 ~ 400	5 ~ 6 kg	2.0 kg	5 sets

Connecting Bar (Sold Separately)

Item Code	Item Name	Applicable Door	Mounting Position	Cabinet Width ※	Length	Weight	Carton
180-120-287	SLUB-535	Wooden Door	Arm A	600	535	191 g	10 pcs
180-104-088	SLUB-551	Glass Frame Door	Arm B	600	551	196 g	10 pcs
180-120-288	SLUB-835	Wooden Door	Arm A	900	835	308 g	10 pcs
180-100-131	SLUB-851	Glass Frame Door	Arm B	900	851	312 g	10 pcs

※The side board thickness is 15 mm.