

MONOFLAT FAD (FOR PARTITION USE)



FAD-54



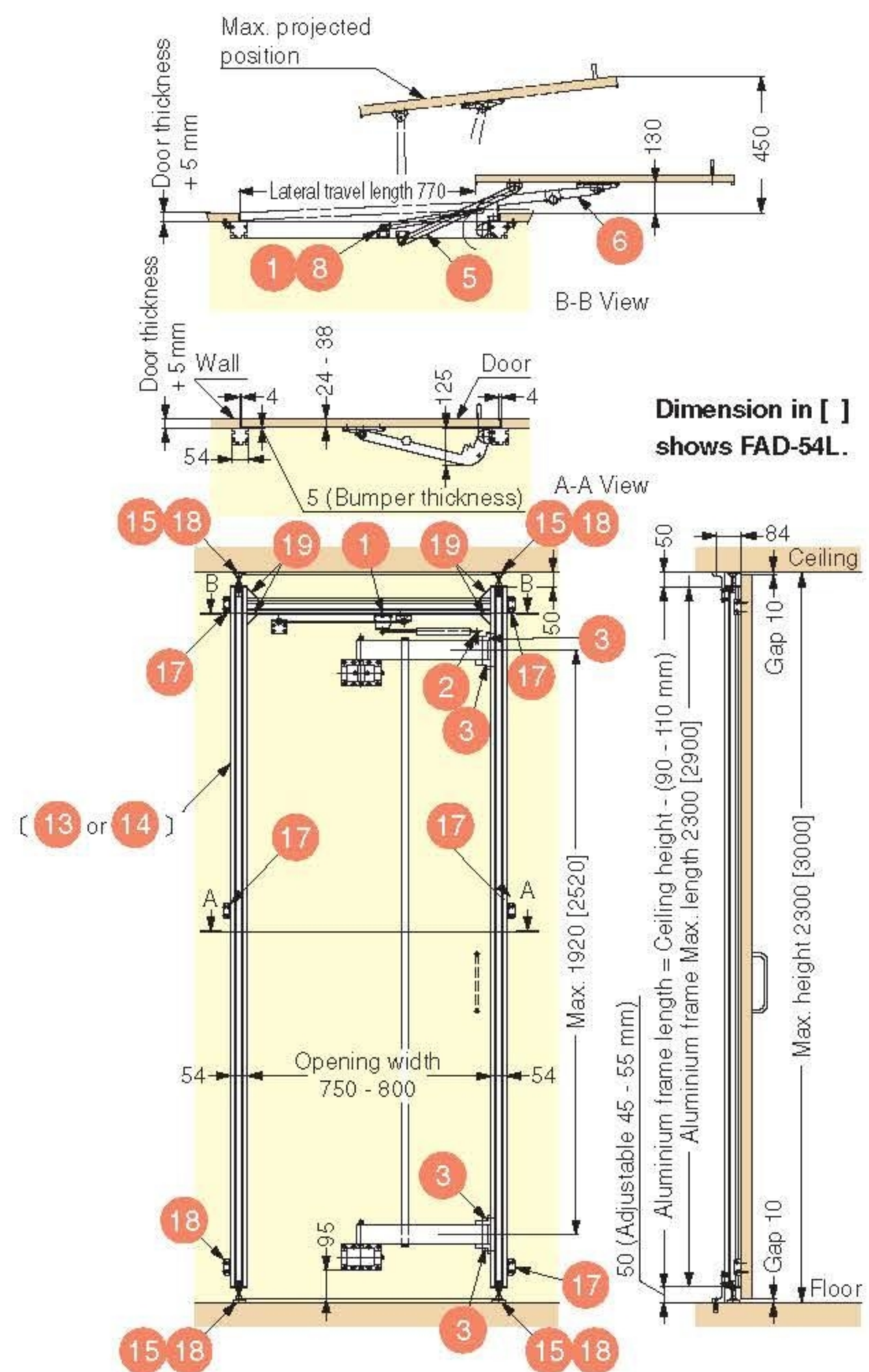
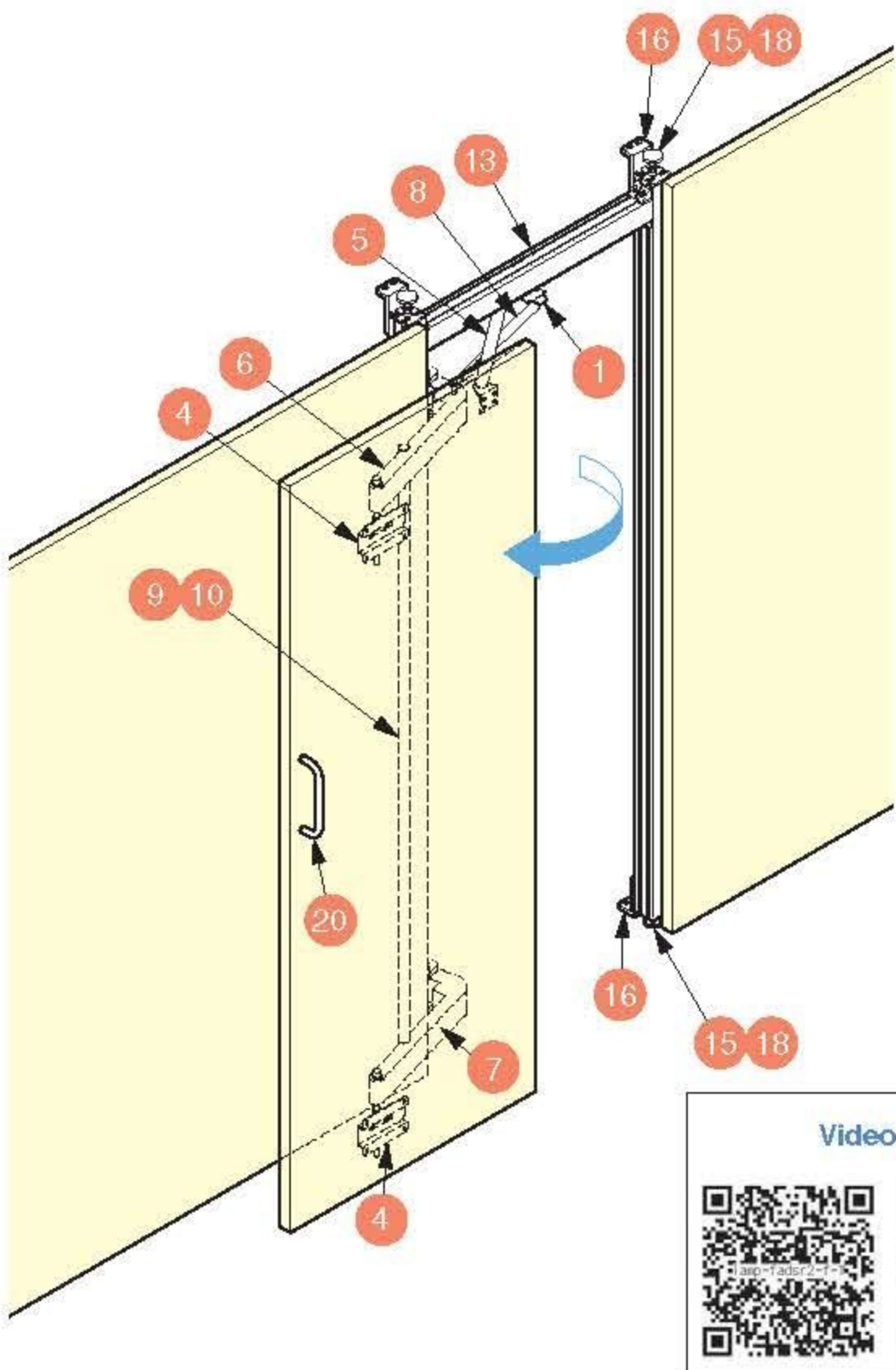
MonoFlat FAD®

	FAD-54	FAD-54L
Door Width	800 - 850 mm ※ ¹	
Door Height	Max. 2380 mm	Max. 2980 mm
Door Thickness	24 - 38 mm	
Door Weight	Max. 35 kg/Door	
Specification	Single Door, Double Door & Corner Door	

※¹ When overlay is 25 mm both sides.

Features

- Innovative mechanism allows lateral opening of doors.
- Door will be "flush" against surrounding walls.
- Can be used for overlay and inset applications.
- The gas spring provides a smooth self opening and closing movement.
- Frees the cabinet door from using ordinary hinges and requires only half the space in front of cabinet / door to open the door.
- No bottom rail required.
- Height adjustable by cutting the arm connecting pipe.
- Vertically and horizontally adjustable after installation.



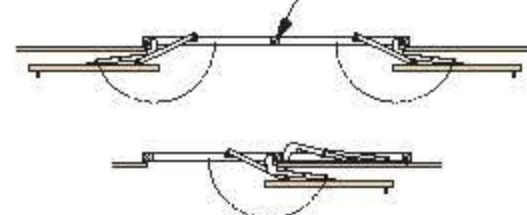
Opening Variations (Single / Double Door)

Left hand use



Right / Left combination¹

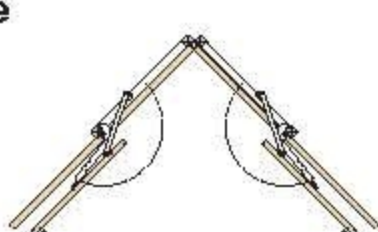
*¹ Vertical frame or door stoppers on floor for both doors required in centre.



Right hand use



Corner use



Parts Set (Per Door)

Necessary Parts

Please refer to "Qty [a] - [b]" for parts included in each set.

Set Name	Item Code	Item Name
a) Parts Set (Max. Door Height 2380 mm)	250-121-314	FAD-54
b) Parts Set (Max. Door Height 2980 mm)	250-021-876	FAD-54L

Parts Included

No.	Qty		Part Name	Dimensions	Description
	a	b			
1	1 pc	1 pc	Gas Spring Bracket		<ul style="list-style-type: none"> Material: Steel Finish: Clear Zinc Chromate
2	1 pc	1 pc	Screw Pin		<ul style="list-style-type: none"> Material: Steel Finish: Clear Zinc Chromate
3	4 pcs	4 pcs	Bearing Housing		<ul style="list-style-type: none"> Material: Aluminium Alloy Finish / Colour: Silver
4	2 pcs	2 pcs	Adjustment Bracket		<ul style="list-style-type: none"> Material: Steel / Polyacetal (POM) Colour: Silver
5	1 pc	1 pc	Support Arm		<ul style="list-style-type: none"> Material: Steel / Polyacetal (POM) Finish / Colour: Silver
6	1 pc	1 pc	Upper Arm		<ul style="list-style-type: none"> Material: Aluminium Alloy Finish / Colour: Silver
7	1 pc	1 pc	Lower Arm		<ul style="list-style-type: none"> Material: Aluminium Alloy Finish / Colour: Silver
8	1 pc	1 pc	Gas Spring		<ul style="list-style-type: none"> Colour: Grey
9	1 set	-	Arm Connector & Clamp (For FAD-54/ Pipe Length 1990 mm)		<ul style="list-style-type: none"> Material: Steel Finish / Colour: Silver
10	-	1 set	Arm Connector & Clamp (For FAD-54L / Pipe Length 2600 mm)		<ul style="list-style-type: none"> Material: Steel Finish / Colour: Silver
11	1 pc	1 pc	Clear Bumper		<ul style="list-style-type: none"> Item Code: 210-030-639 Item Name: BS-36 Material: Polyurethane (PUR) Finish: Clear
12	1 pc	1 pc	Strip Brush	-	<ul style="list-style-type: none"> Colour: Grey
13	2 pcs	1 pc	Aluminum Frame for FAD-54		<ul style="list-style-type: none"> Material: Aluminium Alloy Finish: Anodized+Clear *Vertical: 2300 mm X 2 pcs Horizontal: 800 mm X 1 pc
14	-	2 pcs	Aluminum Frame for FAD-54L		<ul style="list-style-type: none"> Material: Aluminium Alloy Finish: Anodized+Clear *Vertical: 2900 mm X 2 pcs Horizontal: 800 mm X 1 pc
15	4 pcs	4 pcs	Leveling Glide Base		<ul style="list-style-type: none"> Material: Steel Finish / Colour: Silver
16	4 pcs	4 pcs	Bracket for Aluminum Frame		<ul style="list-style-type: none"> Material: Aluminium Alloy Finish / Colour: Silver
17	6 pcs	6 pcs	Angle Connector		<ul style="list-style-type: none"> Material: Steel Finish: Clear Zinc Chromate
18	4 pcs	4 pcs	Leveling Glide		<ul style="list-style-type: none"> Item Code: 200-140-593 Item Name: ADR37-10-50 Material: Steel / Elastomer (TPE) Finish: Clear Zinc Chromate / Black
19	8 pcs	8 pcs	Corner Connector		<ul style="list-style-type: none"> Item Code: 120-040-456 Item Name: PJ-60 Material: Aluminium Alloy / Zinc Alloy (ZDC) Finish: Silver / Yellow Zinc Chromate