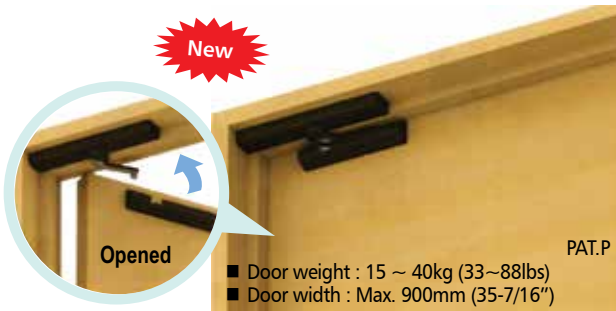


Door Closers



■ Door weight : 15 ~ 40kg (33~88lbs)
 ■ Door width : Max. 900mm (35-7/16")



LAMP LDD-S LAPCON DOOR DAMPER
 (SURFACE MOUNT/RETROFIT DESIGN)



LAMP LDD-V Concealed Door Damper

- Door Weight – 15 – 40 kgs.
- Door Width – Max. 900mm
- Door Thickness – Min. 33mm



MI-701/701D

Door Closer

- Door weight:
15-30kg (D= Hold open)



MI-713

Medium Duty Door Closer

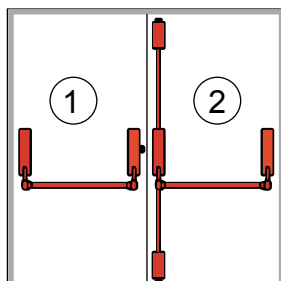
- Door weight: 45 - 60kg



M1-5203

Heavy Duty Door Closer

- 500,000 Cycle Passed
- Load Capacity: 40-65kgs



(1) 4290600000 + PAM 26000101000

(* Outside handle with lock ART.0416.31 is available upon request)

Corni Emergency Panic Device

(2) 4290600000 + PAM 26000101000

+0342900000 + 0444401000



DT-30

Concealed Door Closer

- 500,000 Service Life
- Economical Lines
- Door size: 900mm x 2100mm
- Door weight: 25-45kg



MI-081

Door Closer

Door weight: 35-55kgs

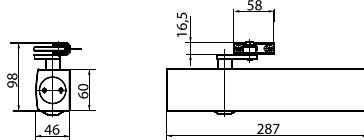
Door Closers

GEZETS 4000

Link arm door closer for single-leaf doors with a leaf width up to 1400mm



The overhead door closer is suitable for both left and right hand single action door. The closing force to EN 1154 size 1-6 is infinitely variable from the front and is easy to monitor thanks to the optical size indicator. The back check and thermo-constant closing speed are also adjustable from the front. The latching speed is adjusted by means of the link arm. The closer features a safety valve for both the open and close directions.



Products features	GEZE TS 4000 closer size 1-6	GEZE TS 4000 S closer	GEZE TS 4000 closer size 5-7
Closing force in accordance with En 1154		1-6	5-7
Leaf width recommended up to		1400mm	1600mm
Identical version DIN-L and DIN-R	•	•	•
Product tested in accordance with	Door closer tested in accordance with EN 1154		
Suitable for fire protection doors	•	•	•
Mounting plate with hole patterns acc. to EN1154 Supplement 1	•	•	•
Length		287 mm	
Installation depth		46mm	
Height		60mm	
Functions			
Adjustable closing force		• With variable adjustable	
Adjustable closing speed	•		
Adjustable latching action	• Via Link arm	• Via Valve	• Via Link arm
Integrated back check		• Hydraulically adjustable	
Integrated delayed closing action		•	
Closing force adjustment position		Front	
Safety valves as protection against vandalism	•	•	•
Thermo-constant valves	•	•	•

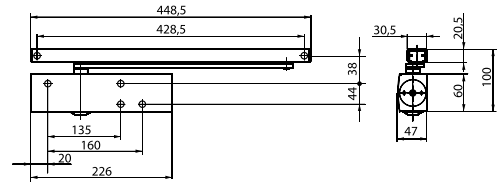
• = Yes ◯ = No

GEZETS 3000 V

Guide rail door closer for 1-leaf doors up to 1100mm leaf width



The overhead door closer TS 3000 V is suitable for both left and right hand single action door. The closing force, size 1-4 acc. to EN 1154, can be adjusted at the side, the hydraulic latching action and thermally stabilised closing speed can be adjusted from the front.



Products features	GEZE TS 3000 V closer	GEZE TS 3000 V BC closer
Closing force in accordance with En 1154		1-4
Leaf width recommended up to		1100mm
Identical version DIN-L and DIN-R	•	•
Product tested in accordance with	Door closer tested in accordance with EN 1154	
Length		226mm
Installation depth		46mm
Height		60mm
Functions		
Adjustable closing force		Yes, stepless
Adjustable closing speed	•	•
Adjustable latching action		Yes, via valve
Integrated back check	No	Yes, hydraulically adjustable
Closing force adjustment position		At the side
Safety valves as protection against vandalism		•
Thermo-constant valves		•

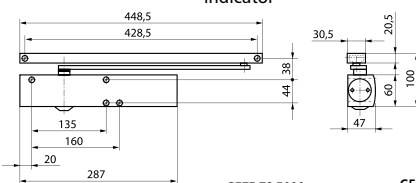
• = Yes ◯ = No

GEZETS 5000

Guide rail door closer for 1-leaf doors up to 1400mm leaf width



The overhead door closer TS5000 stands for clear lines and numerous system variants. The closing force, size 2-6 acc. to EN 1153, the terminally stabilised closing speed, the hydraulic latching action and the back check can all easily be regulated from the front in the installed state. The set closing force can be easily checked due to the visual size indicator.



Products features	GEZE TS 5000 closer	GEZE TS 5000 S closer
Closing force in accordance with En 1154		2-6
Leaf width recommended up to		1400mm
Same version for left and right-hand doors	•	•
Product tested in accordance with	Door closer tested in accordance with EN 1154	
Fire protection door suitability	•	•
Mounting plate with hole pattern in accordance with EN1154 Supplement	•	•
Length		287mm
Installation depth		47mm
Height		60mm
Functions		
Adjustable closing force		Yes, stepless
Adjustable closing speed	•	•
Adjustable latching action		Yes, via valve
Integrated back check		•
Integrated delayed closing action	◯	Yes, hydraulically adjustable
Closing force adjustment position		Front
Visual display of the closing force	•	•
Safety valve as protection against vandalism	•	•
Thermo-constant valves	•	•

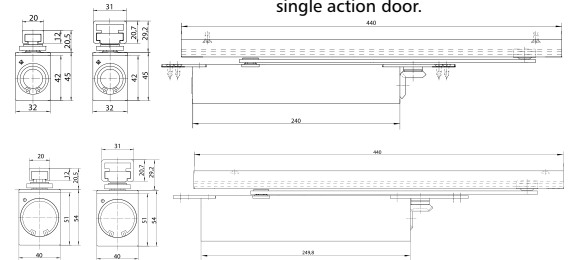
• = Yes ◯ = No

GEZE Boxer

Integrated door closer for single-leaf doors with a leaf width of up to 1400mm



GEZE Boxer integrated door closer is incorporated discreetly into the door leaf and frame. The guide rail and lever are only visible when the door is open. Once the door closer is installed, the closing force and speed, latching action and hydraulic back check can be conveniently adjusted from the top. It is suitable for both left and right hand single action door.



Products features	GEZE TS 5000 closer	GEZE TS 5000 S closer
Closing force in accordance with En 1154	2-4	3-6
Leaf width recommended up to	1100mm	1400mm
Leaf weight recommended up to	130kg	180kg
Minimum leaf thickness	40	50
Identical version DIN-L and DIN-R	•	•
Product tested in accordance with	Door closer tested in accordance with EN 1154	
Suitable for fire protection doors	•	•
Length	286mm	293mm
Installation depth	32mm	40mm
Height	45mm	54mm
Functions		
Adjustable closing force		Yes, infinitely variable
Adjustable closing speed	•	•
Adjustable latching action		Yes, via valve
Integrated back check		Yes, hydraulically adjustable
Closing force adjustment position		Top
Safety valve as protection against vandalism	•	•

• = Yes ◯ = No

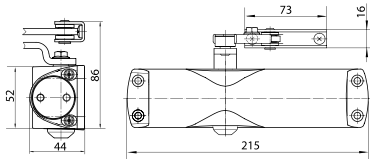
Door Closers

GEZE TS 4000

Link arm door closer for single-leaf doors with a leaf width up to 1400mm



The overhead door closer is suitable for both left and right hand single action door. The closing force to DIN EN 1154, size 2-4, is infinitely variable and is adjustable at the side. The closing speed and latching action can be conveniently adjusted from the front.

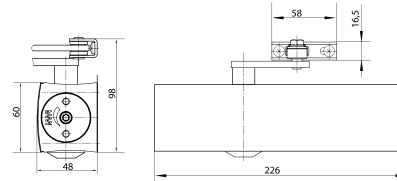


GEZE TS 1000 C

Link arm door closer for single-leaf doors with a leaf width up to 950mm



The overhead door closer is suitable for both left and right hand single action door. It has an adjustable closing speed and hydraulic latching action. There are two different closing force setting, which can be selected simply by rotating the bearing block.

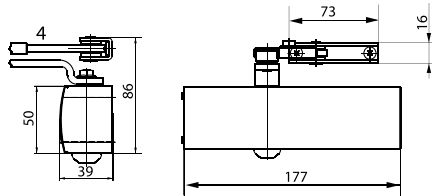


GEZE TS 1500

Link arm door closer for single-leaf doors with a leaf width up to 1100mm



The overhead door closer TS5000 stands for clear lines and numerous system variants. The closing force, size 2-6 acc. to EN 1153, the terminally stabilised closing speed, the hydraulic latching action and the back check can all easily be regulated from the front in the installed state. The set closing force can be easily checked due to the visual size indicator

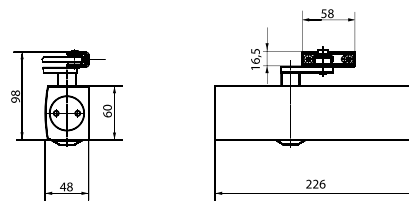


GEZE TS 2000V

Link arm door closer for single-leaf doors with a leaf width up to 1250mm



The overhead door closer is suitable for both left and right hand single action door. The closing force is variable in accordance with DIN EN 1154, size 2/4/5, by mounting position. The closing speed can be conveniently adjusted from the front and latching action is adjusted by means of the link arm.



Products features

	GEZE TS 1000 C closer	GEZE TS 1500 closer
Closing force in accordance with En 1154		3/4
Leaf width recommended up to		1100mm
Identical version DIN-L and DIN-R	•	•
Product tested in accordance with	Door closer tested in accordance with EN 1154	Door closer tested in accordance with EN 1154
Length	215mm	177mm
Installation depth	44mm	39mm
Height	52mm	50mm

Functions

	• Via mounting	• Via mounting
Adjustable closing force	•	•
Adjustable closing speed	•	•
Adjustable latching action	• Via Value	• Via Value
Integrated back check	○	○
Closing force adjustment position	Mounting position	Mounting position

• = Yes ○ = No

Products features

	GEZE TS 2000 NV closer	GEZE TS 2000 V closer	GEZE TS 2000 VBC closer
Closing force in accordance with En 1154	2-4	2/4/5	2/4/5
Leaf width recommended up to	1100mm	1250mm	1250mm
Identical version DIN-L and DIN-R	•	•	•
Product tested in accordance with	Door closer tested in accordance with EN 1154		
Suitable for fire protection doors	•	○	○
Mounting plate with hole patterns acc. to EN1154 Supplement 1	•	•	•
Length	266 mm		
Installation depth	48mm		
Height	60mm		

Functions

	• With variable adjustable	• Via mounting	• Via Link arm
Adjustable closing force	•	•	•
Adjustable closing speed	•	•	•
Adjustable latching action	• Via Value	○	• Via Link arm
Integrated back check	Optional	○	○ Hydraulic fixed
Closing force adjustment position	On the side	Mounting position	
Thermo-constant valves	•	•	•

• = Yes ○ = No